

How to hardwire the Olympus D-580 Digital Camera

Copyright 2003, *PixController* <http://www.PixController.com>, all rights reserved.

This document covers in detail how to modify the Olympus D-580 Digital Camera so that the shutter can be controlled remotely.

Please note that if you make this modification to your Olympus camera that you will void your camera's warranty. This modification can also result in damage to your digital camera if you do not follow the instructions properly.

Tools Needed

1. 2.4 mm #0 Philips Screwdriver & Small Flat Blade Screwdriver.
2. Soldering iron with fine tip.
3. Small 28 or 30 gauge wire.
4. Small rubber wire feed grommet

Notes

The Olympus D-580 makes a very good camera for crisp clear pics. This camera does have a zoom lens, and this will make your case design a little more creative. The lens does stay zoomed if the power is left on to this camera, and this is the preferred way to control this camera. If you zoom the lens before placing the camera into your trail camera case it will keep the zoomed position. This might let you move your trail camera further away from sensitive areas such as scrapes.

Remove the camera covers:

The first step is to remove the back cover of the D-580.

This is easily done by removing the (7) small Philips screws from the case.

Note: one of the screws is located under the USB flap cover, and one under the XD card door.

Be sure to remove the XD memory™ card and batteries before removing the case.

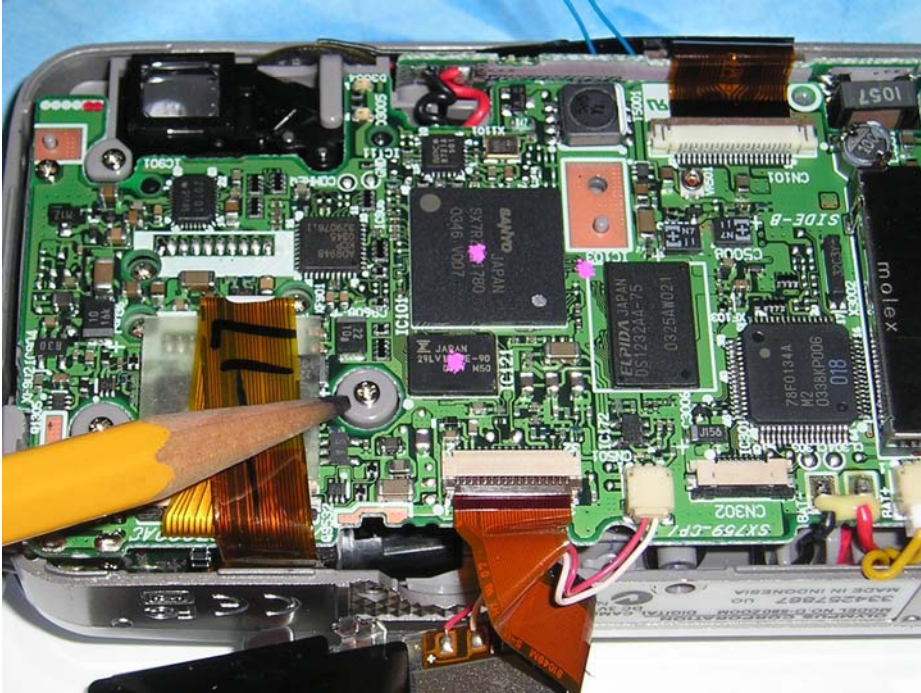
You will now need to remove the small ribbon cable that attaches to the back cover which controls the menu setting's, this is easily done by pulling on the ribbon gently and removing it from the plug.



Once you have the back cover removed from the camera you will need to remove the 4 small screws holding the board and LCD screen to the front housing. There are 2 on the bottom right, 1 screw is located on the top left corner, and one is on the top right corner of the LCD Screen.

Use caution when removing the LCD screen so you do not make contact from the LCD screen metal mounting tabs with other connections and chance shorting out the camera

After you remove the LCD screen you will need to remove one last screw going through the camera board into the front housing (**this is the hidden screw behind the LCD screen**)



Once you remove these 5 screws you can now pull the interior parts out as one unit

Olympus D-580 with back cover removed.



Camera control contact points

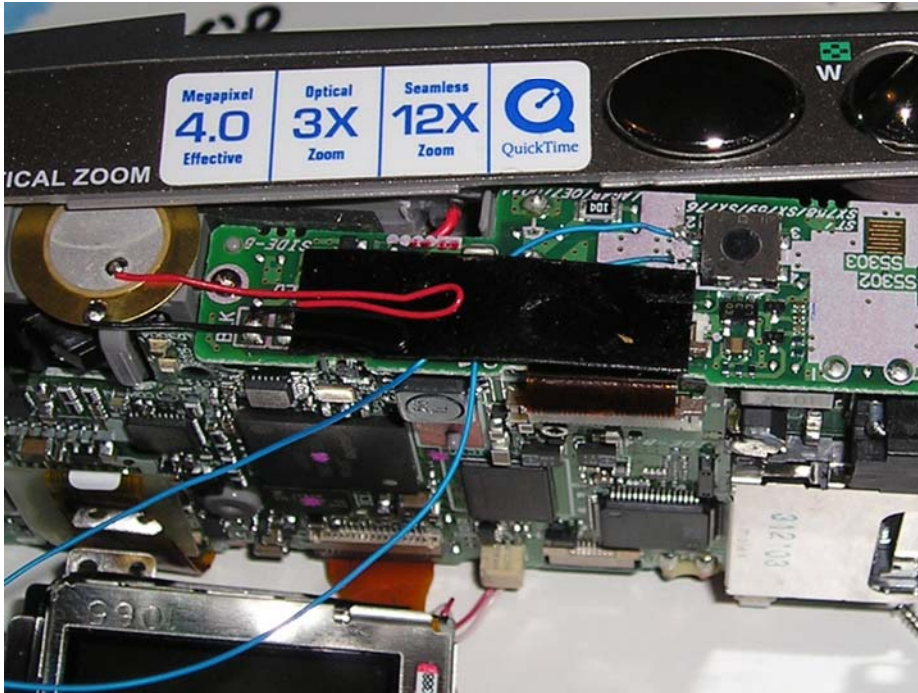
These are the contact points to control the camera shutter and refresh controls. These contact points are much smaller than the D-370 or D-380, so you have to be careful when soldering wires to these points.



Note: When soldering to these contact points use a fine tipped soldering iron and small gauge wire. Be careful of not creating a solder bridge between the Shutter and Refresh contact points.

Camera top view.

Olympus D-580 remote camera control contact points. (1 & 2 Refresh & Shutter)
1 is the Refresh & #2 is the Shutter.



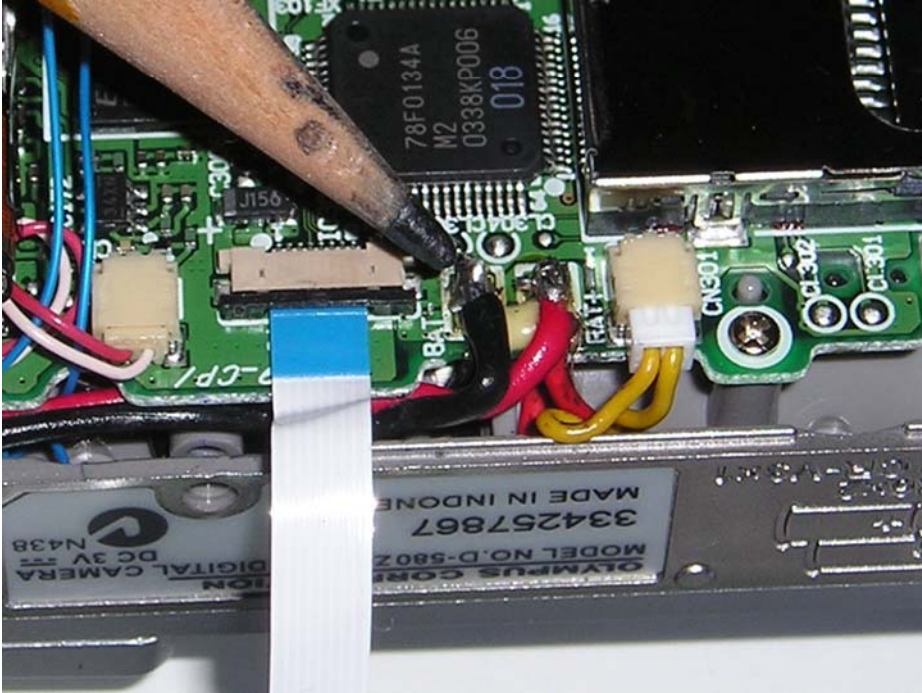
Wiring the camera

Since the contact pads are so small on the D-580 we suggest using a very small gauge wire, such as wire wrap wire. This can be found at your local Radio Shack store. A 2.5 mm stereo connector can be use too, and a good place to put that is in the tri pod mount. Run your wiring under the ribbon tape as shown (**Pay close attention to not touch the high voltage charge capacitor located near the ribbon tape, touching these or making wire contact will send a large voltage through you or the camera and short it out**) now run the wire down across the board along the LCD screen and out by the tripod. By using a rubber grommet in place of the tripod mount makes for a clean finish.

EXTERNAL POWER SUPPLY:

Wiring diagram for an external battery for the D-580. It is recommended that you use a 3 cell battery holder with only rechargeable batteries. The camera will not function with regular alkaline 1.5 v batteries. You must use the 1.2 volt rechargeable batteries.

Here is the battery plug connection to “hard wire a plug or wires to” and run your wire out the tripod mounting area. The board is labeled Bat - and Bat +.



Here is a picture of the D-580 wired.



Olympus D-580