



How to hardwire the Digital Concept 2.1 MP Digital Camera

Copyright©, PixController <http://www.PixController.com>, all rights reserved.



This document covers in detail how to modify the Wal-Mart Digital Concept 2.1 Mega Pixel Digital Camera for remote shutter control from the PixController Universal camera control board. Please see <http://www.pixcontroller.com> or email support@pixcontroller.com for more information.

Please note that if you make this modification to your Digital Concept camera that you will void your camera's warranty. This modification can also result in damage to your digital camera if you do not follow the instructions properly.

Tools/Parts Needed

1. 2.4 mm #0 Philips Screwdriver & Small Flat Blade Screwdriver.
2. Fine tipped soldering iron with heat control.
3. 30 Gauge wire. Wire Wrap type wire can be purchased from your local Radio Shack store. Find one of the 3 part numbers: 278-501, 278-502, 278-503. They come in a spool of 50 feet of wire for \$2.99
4. Small tweezers.
5. Flat blade screw driver or knife.

Getting Started

The Digital Concepts 2.1 Mega Pixel digital camera can be purchased from your local Wal-Mart store. This is an inexpensive digital camera (\$39), and offers a removable SD card, but no built in LCD display. This camera uses a CMOS imaging sensor, and therefore the flash range is very poor (maybe 6 feet). We suggest using the PixController Slave Flash controller with the Mini Strobe Flash board if you plan to use this digital camera. The start up time of this camera is rather slow, in the 4-5 second range, but for the price this camera can be a inexpensive "feeder" camera.



Remove batteries and media card

Before starting your project be sure to remove the 2 AA internal batteries and the Media Card.



Remove the 2 AA batteries and Media Card

Remove Face Plate

In order to access the screws to remove the case you must remove the face plate from the camera case. The face plate is a thin metal plate glued down to the case and removing this can be difficult. Use a sharp knife or a wide blade chisel, and don't worry about bending the metal. You will not use it again.

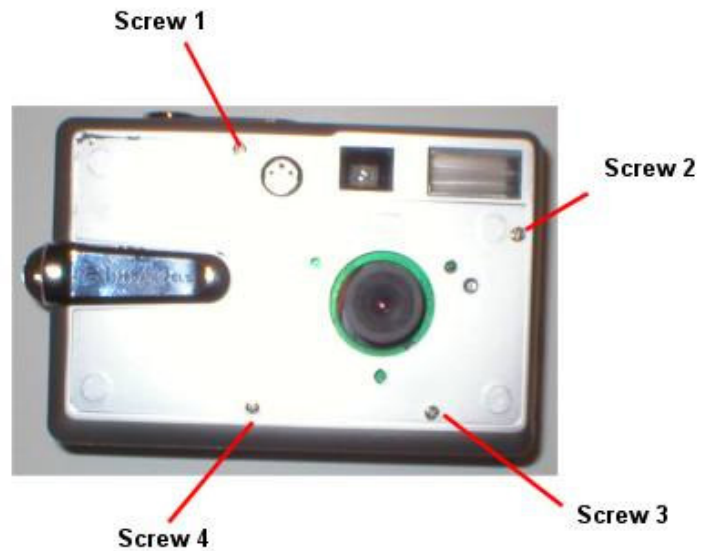


After removing the face plate remove the plastic ring around the camera lens too as shown in the photo to the right.



Remove the camera case screws

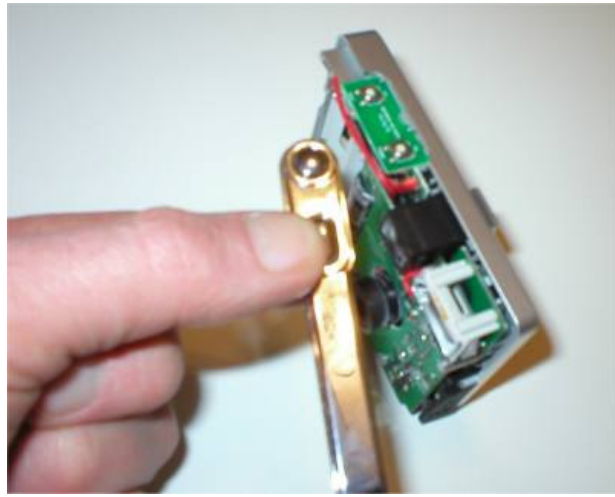
Remove all 4 screws from the camera case. Be sure to place the screws in a safe place while modifying the camera.



Carefully pull the front case cover.

Remove the shutter button

Next remove the shutter and power on/off button assembly so you can gain access to wire these controls.

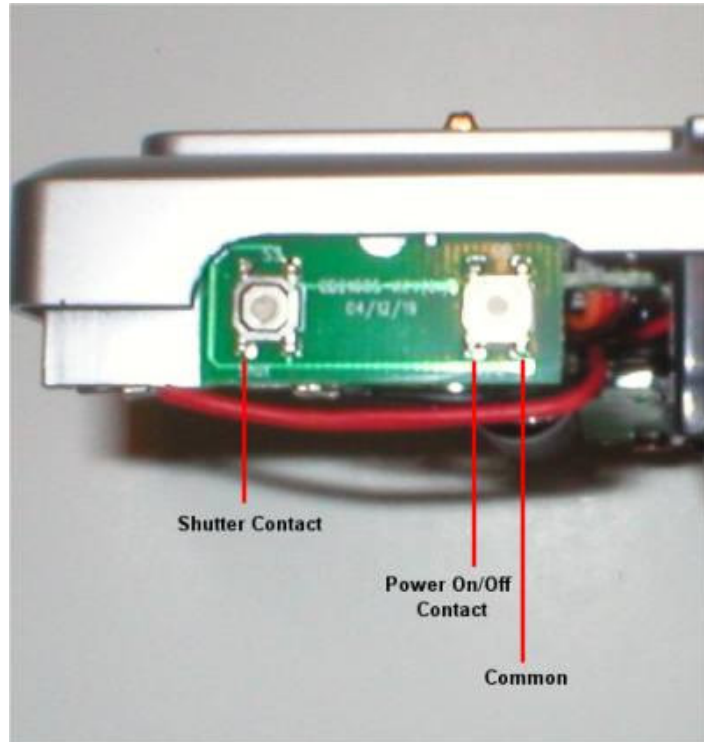


Wire the Power and Shutter contacts

Next you want to attach your power, shutter and common/ground wires to the locations shown here.

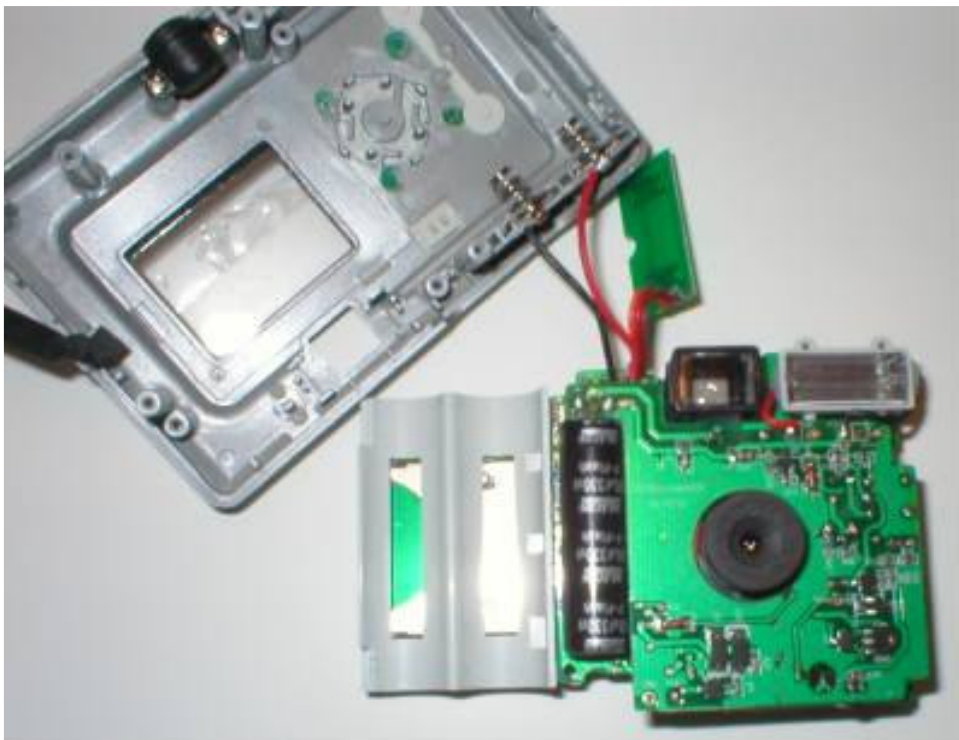
When wiring to your PixController board make the following connections:

DC 2.1 Camera	PixController Board
Shutter Contact	-> Shutter
Power On/Off	-> Power
Common	-> Common/Ground



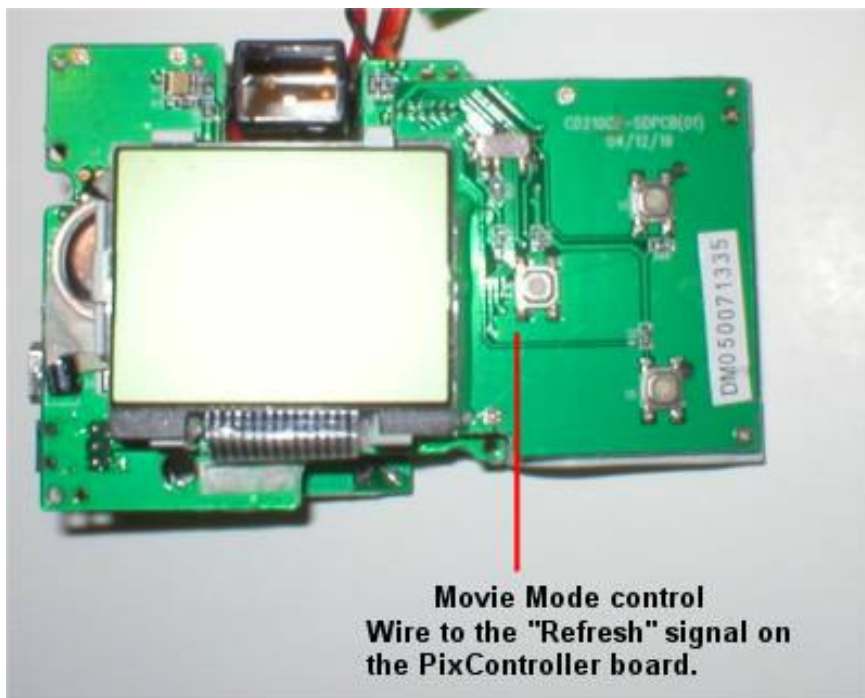
Wiring the movie control

These next steps are optional. They will allow you to wire the camera to take digital movies. First remove the back of the camera cover as shown.



Attach movie control wire

Attach the “movie control” contact wire as shown. Connect this wire to your “Refresh” contact on your PixController board.





Completed Modification. This camera was wired using the phone cable for the PixController Universal board.