

How to hardwire the Olympus D-520 Digital Camera

Copyright 2003, *PixController* <http://www.PixController.com>, all rights reserved.

This document covers in detail how to modify the Olympus D-520 Digital Camera so that the shutter can be controlled remotely. **Please note that if you make this modification to your Olympus camera that you will void your camera's warranty. This modification can also result in damage to your digital camera if you do not follow the instructions properly.**

Tools Needed

1. 2.4 mm #0 Philips Screwdriver & Small Flat Blade Screwdriver.
2. Soldering iron with fine tip.
3. Small gauge wire.
4. Needle nose pliers or tweezers.

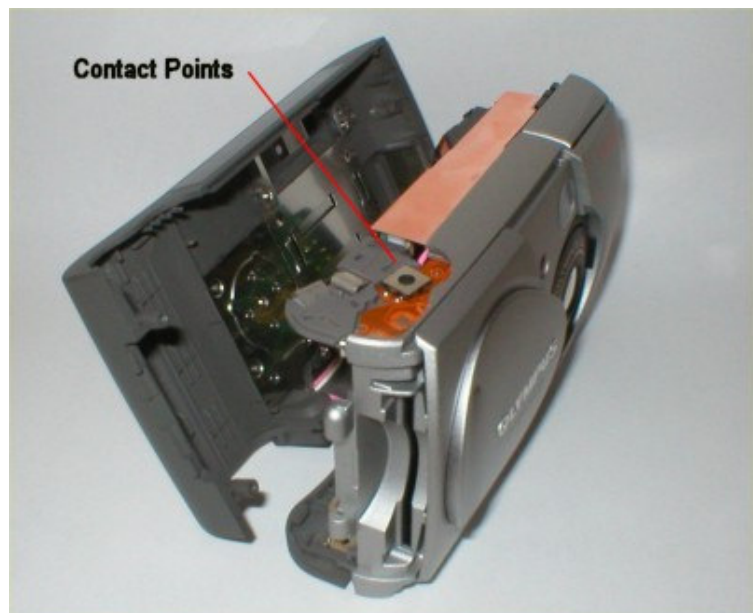
Notes

The Olympus D-520 makes a very good candidate for a trail camera much like the older D-370 and D-380. This camera does have a zoom lens, and this will make your case design a little more creative. The lens does stay zoomed if the power is left on to this camera, and this is the preferred way to control this camera. If you zoom the lens before placing the camera into your trail camera case it will keep the zoomed position. This might let you move your trail camera further away from sensitive areas such as scrapes. The preferred *PixController* to control this camera is the Direct RSP board.

Remove the camera covers

The first step is to remove the back cover of the D-520. This is easily done by removing the small Philips screws from the case. Note: one of the screws is located under the pop up flash. Be sure to open the case with the flash and shutter cover open, then close the shutter cover to remove the 2 screws inside the SmartMedia cover. One other hard screw to locate is found USB flap cover.

Be sure to remove the SmartMedia™ card and batteries before removing the case.



Olympus D-520 with back cover removed and shutter/zoom cover removed.

Camera Contact location

Remove the shutter/zoom cover the gain access to the shutter, refresh, and common contact soldering pads.

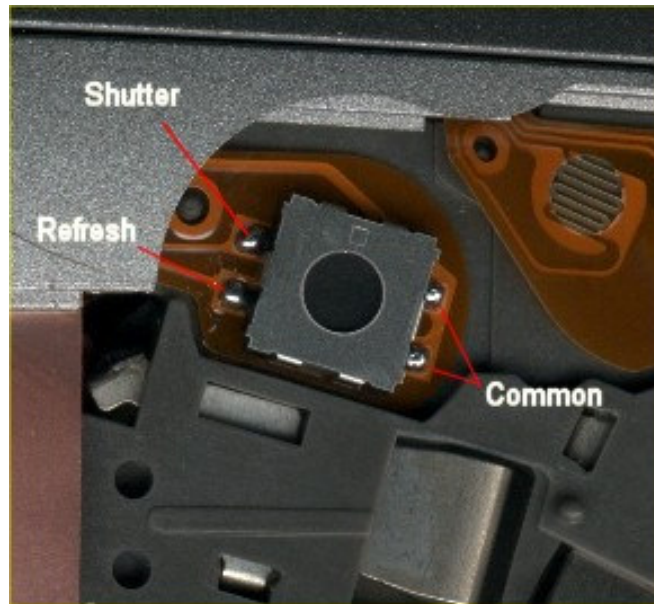


Camera top view.

Camera control contact points

These are the contact points to control the camera shutter and refresh controls. These contact points are much smaller than the D-370 or D-380, so you have to be careful when soldering wires to these points.

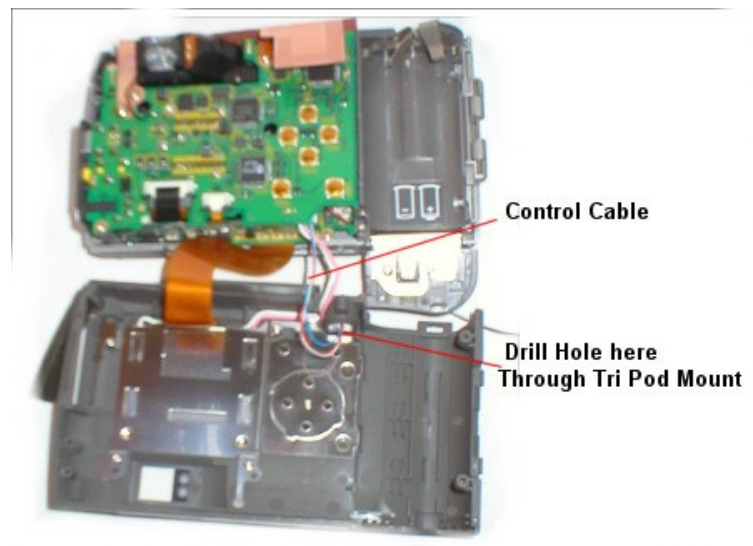
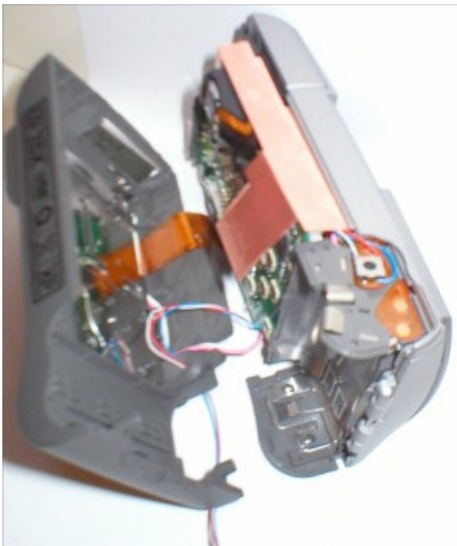
Note: When soldering to these contact points use a fine tipped soldering iron and small gauge wire. Be careful of not creating a solder bridge between the Shutter and Refresh contact points.



Olympus D-520 remote camera control contact points.

Wiring the camera

Since the contact pads are so small on the D-520 we suggest using a very small gauge wire, such as wire wrap wire. This can be found at your local Radio Shack store. A 2.5 mm stereo connector can be used too, and a good place to put that is in the tripod mount. Here are some photos of a wired camera.



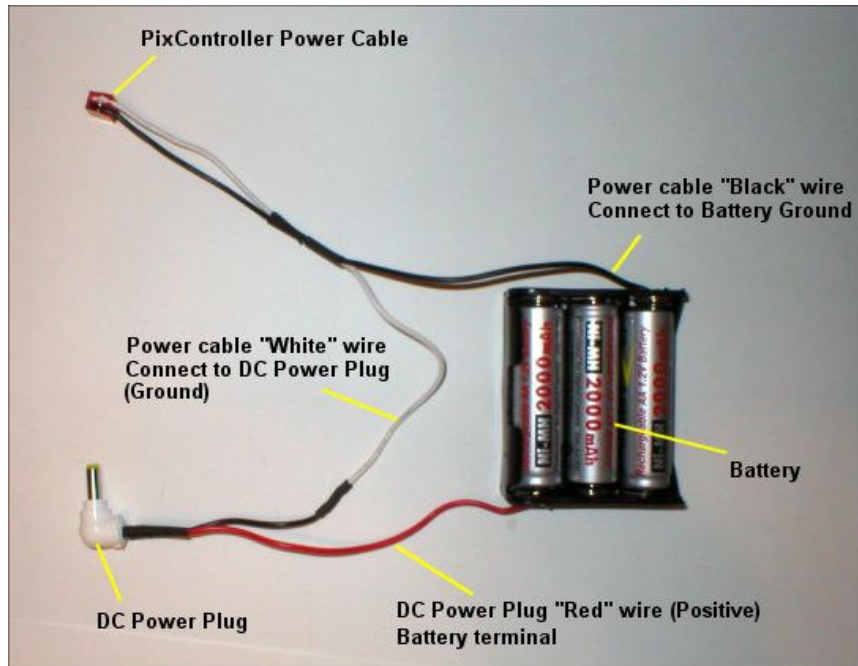


Figure 1

Wiring diagram for an external battery for the D-520. It is recommended that you use a 3 cell battery holder. This holder was constructed from a 4 AA cell holder sold at Radio Shack. This is used with the PixController RSP control board.

PixController Universal Board Wiring Information

Update 9/9/04

Shown below are the locations for wiring to the PixController Universal Board. You may either solder your connections to the "Camera Port", or use the enclosed Phone Cable and wire to the "Phone Jack Port".

Note: The included phone cable for the phone jack can come in 2 different types of configurations: Please make note if you have the **Standard** or **Reverse** Cable.

If the wiring for the phone line you have is BRGY

(Standard Cable)

Black -> Shutter

Red -> Refresh

Green -> Power on/off

Yellow -> Common or Ground

If the wiring for the phone line you have is YGRB

(Reverse Cable)

Yellow -> Shutter

Green-> Refresh

Red -> Power on/off

Black -> Common or Ground

Camera Port

Phone Jack Port

Shutter

Common/Ground

Refresh

Power On/Off

Power On/Off

Refresh

Common/Ground

Shutter

