

## How to hardwire the Olympus D-390 Digital Camera (Internal battery method)

Copyright ©, PixController <http://www.PixController.com>, all rights reserved.

This document covers in detail how to modify the Olympus D-390 for the Direct RSP PixController board can control the shutter remotely. You will also need the special PIC control chip for the (RSP4i PIC Chip). Contact our sales at [sales@pixcontroller.com](mailto:sales@pixcontroller.com) or visit our web site <http://www.pixcontroller.com> for ordering information.

**Please note that if you make this modification to your Olympus camera that you will void your camera's warranty. This modification can also result in damage to your digital camera if you do not follow the instructions properly.**

### Tools Needed

1. 2.4 mm #0 Philips Screwdriver & Small Flat Blade Screwdriver.
2. Very fine tipped soldering iron with heat control.
3. Wire wrap wire (can be purchased from Radio Shack), or small gauge wire.
4. Small tweezers.

### Remove the camera covers

The first step is to remove the back cover of the D-390. This is easily done by removing the 8 small Philips screws from the case.

There are 5 screws located on the bottom of the case, 2 under the xD media card door, and 1 on the back of the case near the view finder.

**Be sure to remove the xD Media card and batteries before removing the case.**

Be sure to store the screws in a safe place while modifying the camera.

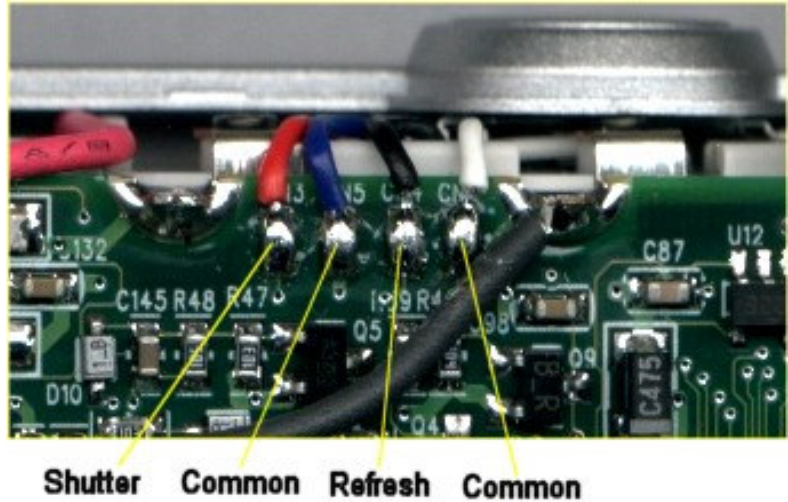


### Camera control contact points

These are the contact points to control the camera shutter and refresh controls. These contact points are small so you have to be careful when soldering wires.

Note, we will not be wiring the common contact points show in this photo.

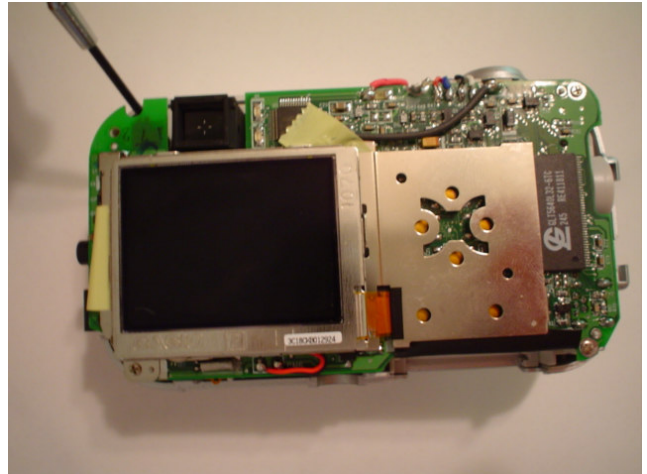
Carefully solder a small gauge wire to the "Shutter" and "Refresh" contacts. In our example we used a red wire for Shutter and blue wire for Refresh.



Wire the "Shutter" and "Refresh" contacts.

### Remove the case front

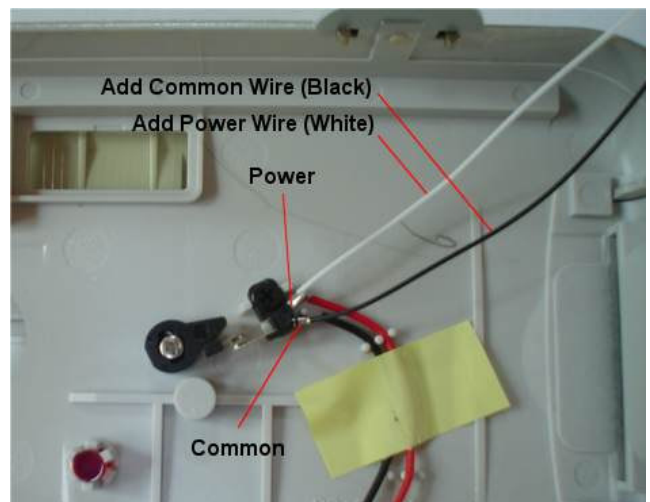
Remove the internal screw so that the front of the case can be removed. Remove the front of the camera case after the internal mounting screw is removed. Once removed you can then carefully lift off the front of the case.



Remove the internal screw

### Locate the Power and Common contacts

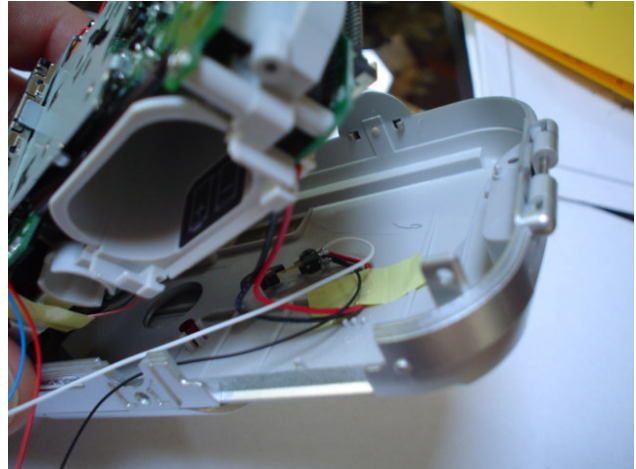
Next wire in the Power and Common contacts. This is located on the inside of the front cover on the "Cover slide internal switch". The "Power" contact point is on the red wire solder contact, and the "Common" contact point is in the black wire solder contact. Add the small gauge wires to both the Power and Common contacts. Carefully heat up the existing solder on the contact points and all the wires.



Solder the Power and Common wires

### Run the added wires through the tripod connector

With the black plastic Tripod connector removed from the camera run the Shutter, Refresh, Power, and Common wires through the Tripod hole.

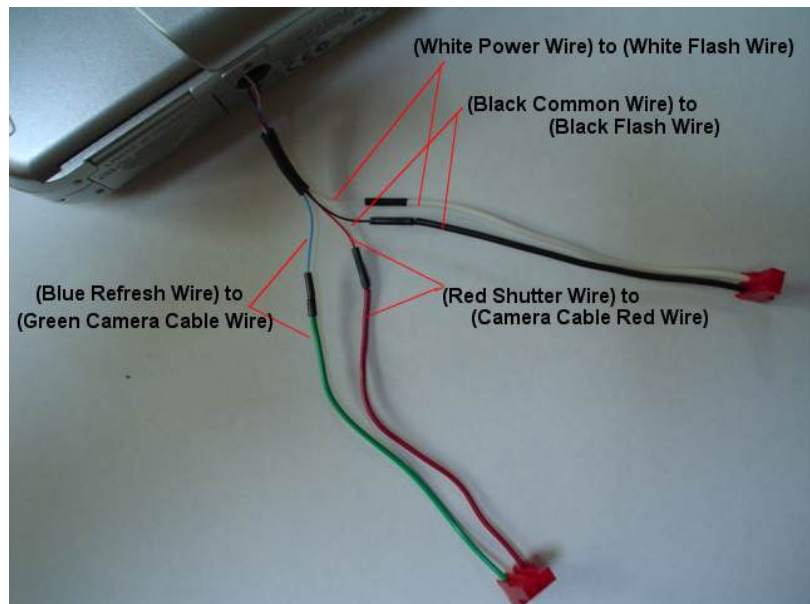


Run the wires through the tripod connector

### Add the PixController camera cables

The last step in your camera modification is to add the PixController camera cables. First attach the red and green camera cable. Be sure to remove the black wire from this cable assembly first since it will not be use.

1. Attach the Refresh wire (Blue) to the (Green) camera cable wire.
2. Attach the Shutter wire (Red) to the (Red) camera cable wire.
3. Attach the Power wire (White) to the (White) flash cable wire.
4. Attach the Common wire (Black) to the (Black) flash cable wire.



### How to Operate your new D-390

When using your new D-390/RSP PixController system there are a few important features you need to follow. First one is that when you open the **cover slide of your D-390 until it is about 1/8" from full open**. In this state the camera should not power up (*the PixController board will power it up/down for you*). Next you want to setup the following setting on your camera to get the best battery life:

**All Reset to Off**  
**Sound to Off**  
**Preview to Off**



## PixController Universal Board Wiring Information

Update 9/9/04

Shown below are the locations for wiring to the PixController Universal Board. You may either solder your connections to the "Camera Port", or use the enclosed Phone Cable and wire to the "Phone Jack Port".

**Note:** The included phone cable for the phone jack can come in 2 different types of configurations: Please make note if you have the **Standard** or **Reverse** Cable.

If the wiring for the phone line you have is BRGBY

(Standard Cable)

Black -> Shutter

Red -> Refresh

Green -> Power on/off

Yellow -> Common or Ground

If the wiring for the phone line you have is YGRB

(Reverse Cable)

Yellow -> Shutter

Green -> Refresh

Red -> Power on/off

Black -> Common or Ground

