

## How to hardwire the Olympus D-370 and D-380 Digital Cameras

Copyright ©, PixController <http://www.PixController.com>, all rights reserved.

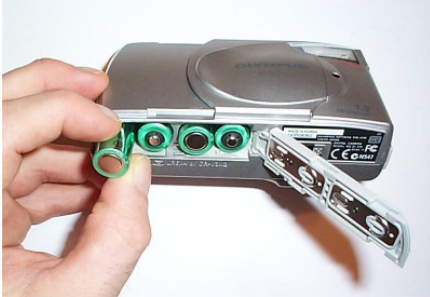
This document covers in detail how to modify either the Olympus D-370 or D-380 Digital Camera so that the shutter can be controlled remotely. Please note that if you make this modification to your Olympus camera that you will void your camera's warranty.

### Tools Needed

- 2.4 mm #0 Philips Screwdriver & Small Flat Blade Screwdriver.
- 3/16" Drill Bit and Drill.
- Soldering Iron with a small tip.
- (3) 6" 24 Gauge Wires.

### **1. Remove the Camera Batteries and SmartMedia Card**

Before you begin to modify your camera you need to make sure you remove the batteries and the SmartMedia card from the camera. If you leave them in you can damage your camera or the media card. Note Figures 1 and 2 for the location of the 4 AA Batteries and the SmartMedia card.



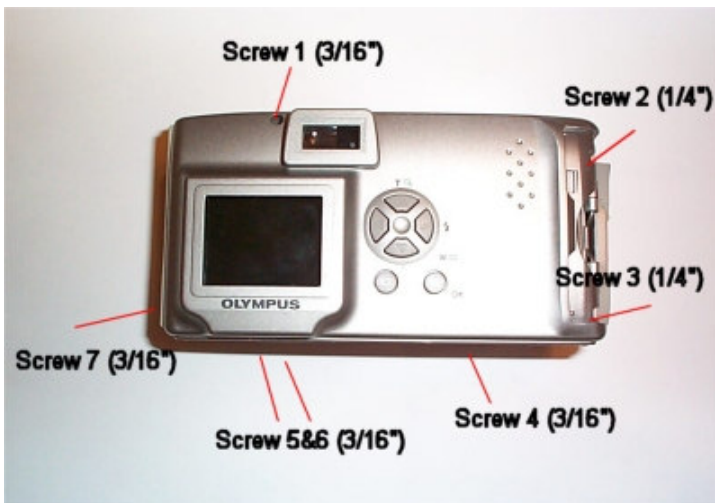
*Figure 1*



*Figure 2*

### **2. Remove the Screws**

The next step is to remove the screws from the camera case. There are a total of 7 small screws to remove from the camera body. Note the location of each screw in Figure 3. There are 5 screws that are 3/16 inch in length, and 2 that are 1/4 inch in length.



*Figure 3*

Using a small 2.4 mm Philips type screwdriver remove screw #1 shown in Figure 5. Be sure to keep a small jar handy to keep your screws in. Next open the door where the SmartMedia card is located and remove screws #2 and #3 from the locations shown in Figure 6. Note, these are the longer 1/4 inch screws. After the screws are removed close the door so it stays in place when the camera is taken apart.

Next open the door that covers the batter compartment. Remove screw #4 from the location shown in Figure 7.



Figure 5



Figure 6

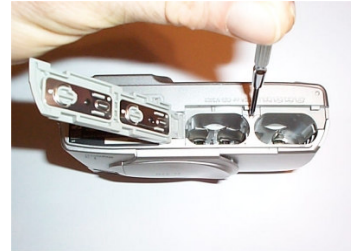


Figure 7

Next remove screws #5 and #6, which are located around the camera's tripod mount seen in Figure 8. Lastly remove screw #7, which is located under the flap where the USB port is.

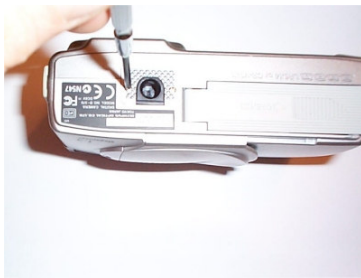


Figure 8



Figure 9

You should have these 7 screws set aside shown in Figure 10 while you now remove the camera back.



Figure 10

### 3. Remove Back Cover

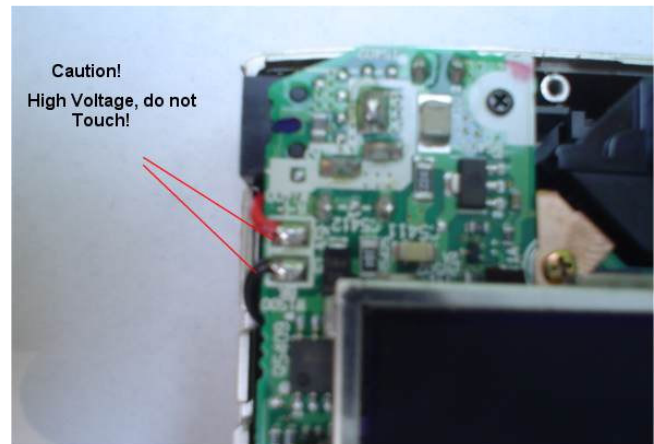
The next step is to remove the back cover. This is done by taking a small flat blade screwdriver and carefully prying apart the back cover from the middle seam. See Figure 11. Note: you must keep the tabs open that cover the DC Power Input and the USB port when doing this.



*Figure 11*

**Caution!**

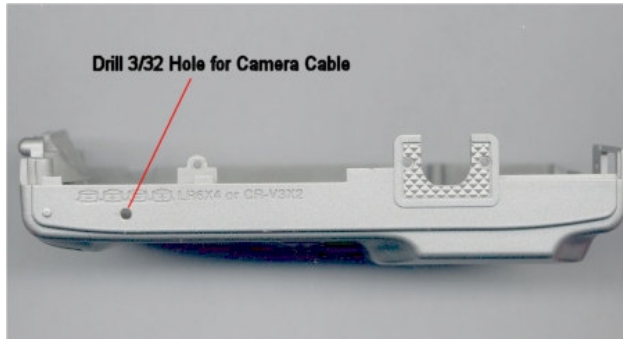
Be sure not to touch the area show. This is where the flash CAP is located and it will give you a nasty shock if touched. It's a good idea to place a piece of electrical tape over this area when performing this modification



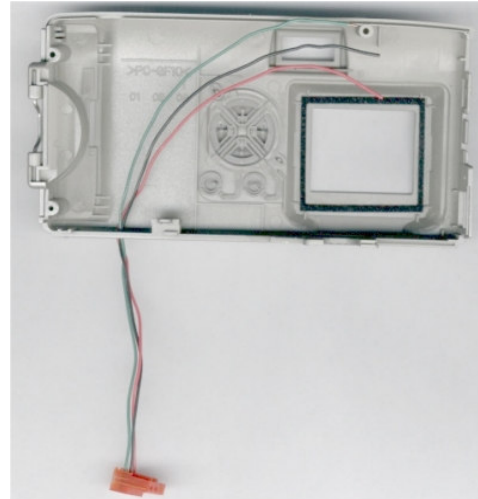
Do not touch this area!

#### 4. Drill Camera Cable Hole

Next you need to drill a small 3/16" hole in the bottom of the back cover. This hole is needed to run the camera cable wires through. Note the location of the hole in Figure 12. Once drilled insert the Camera Cable wires into the hole with the connector on the outside. See Figure 13 for how this should look.



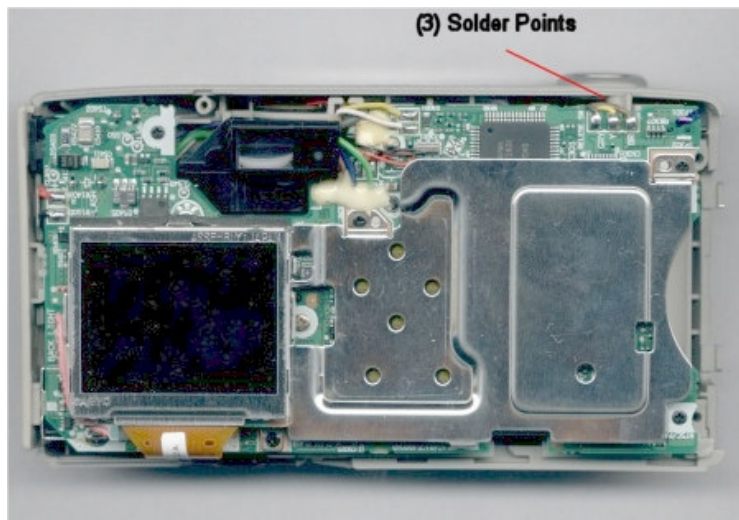
*Figure 12*



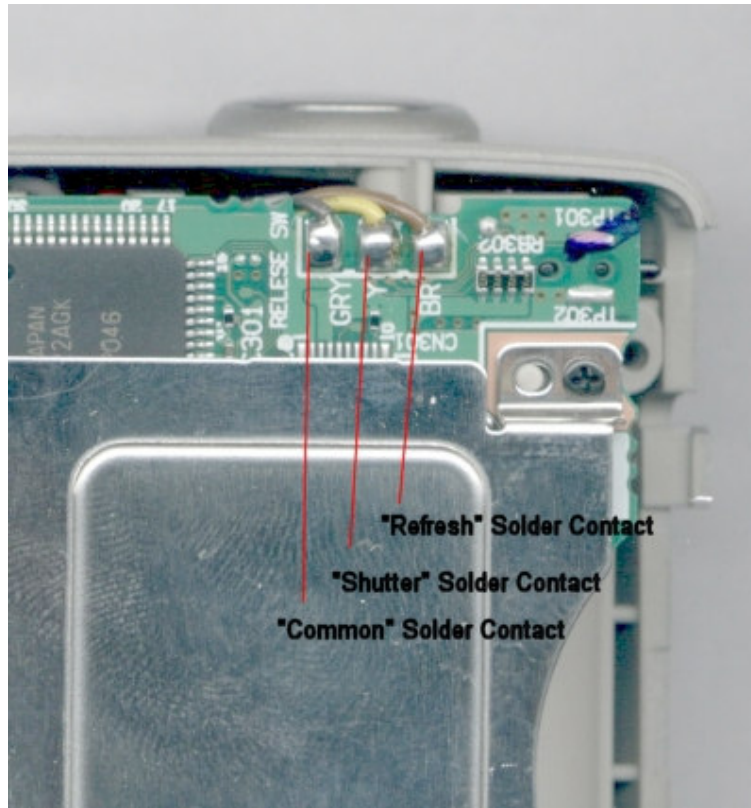
*Figure 13*

#### 5. Solder Camera Cable

The last step is to solder the Camera Cable into place. This is the most critical part of the modification. Please be familiar with soldering techniques before soldering the wires in place. Locate the 3 soldering contact points shown in Figures 14 and 15. They are located near the shutter button of the camera. You will be soldering 3 wires to the "Shutter", "Refresh", and "Common" contact points. Figure 15 shows the exact locations of the solder points.

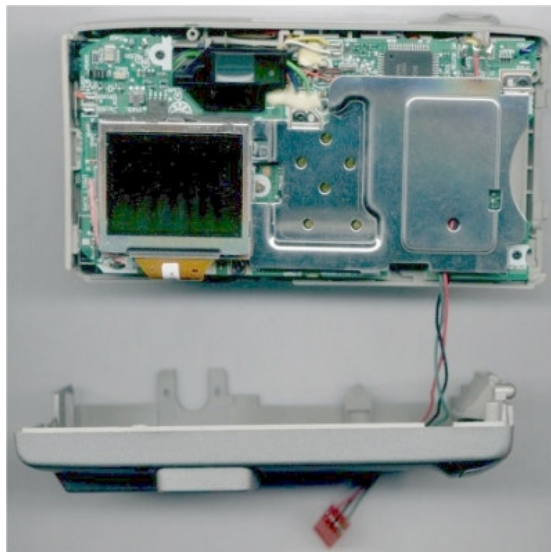


*Figure 14*



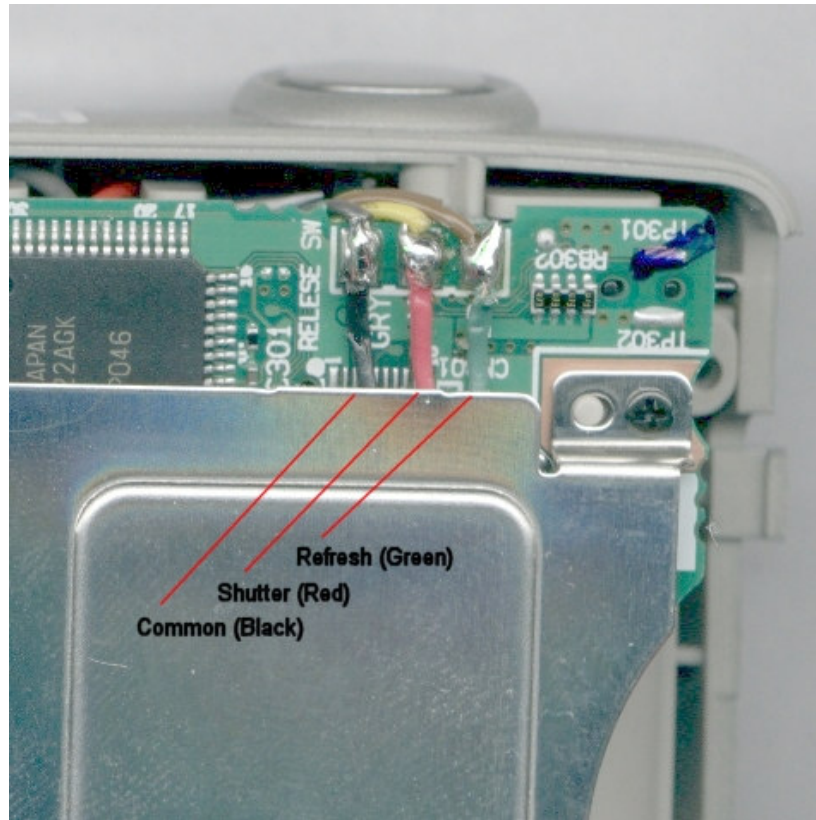
*Figure 15*

Next carefully place the camera cable under the sheet metal piece shown in Figure 16.



*Figure 16*

Lastly solder the Camera Cable into place. See Figure 17 for the location of the Black, Red, and Green wires. Carefully solder these wires in place, and be sure not to remove the existing wires. Also, be sure not to create a "solder bridge" between any of the 3 solder contact points.



*Figure 17*

## 6. Finished

You are now complete with the hardware modification of your Olympus digital camera. Simply replace the camera back and insert the 7 screws into the case. Figure 18 shows your completed camera with camera cable.



*Figure 18*

## PixController Universal Board Wiring Information

Update 9/9/04

Shown below are the locations for wiring to the PixController Universal Board. You may either solder your connections to the "Camera Port", or use the enclosed Phone Cable and wire to the "Phone Jack Port".

**Note:** The included phone cable for the phone jack can come in 2 different types of configurations: Please make note if you have the **Standard** or **Reverse** Cable.

If the wiring for the phone line you have is BRGY

(Standard Cable)

Black -> Shutter

Red -> Refresh

Green -> Power on/off

Yellow -> Common or Ground

If the wiring for the phone line you have is YGRB

(Reverse Cable)

Yellow -> Shutter

Green -> Refresh

Red -> Power on/off

Black -> Common or Ground

