

# D 340L / D 340R / D 360L IR removal



Remove three gold screws

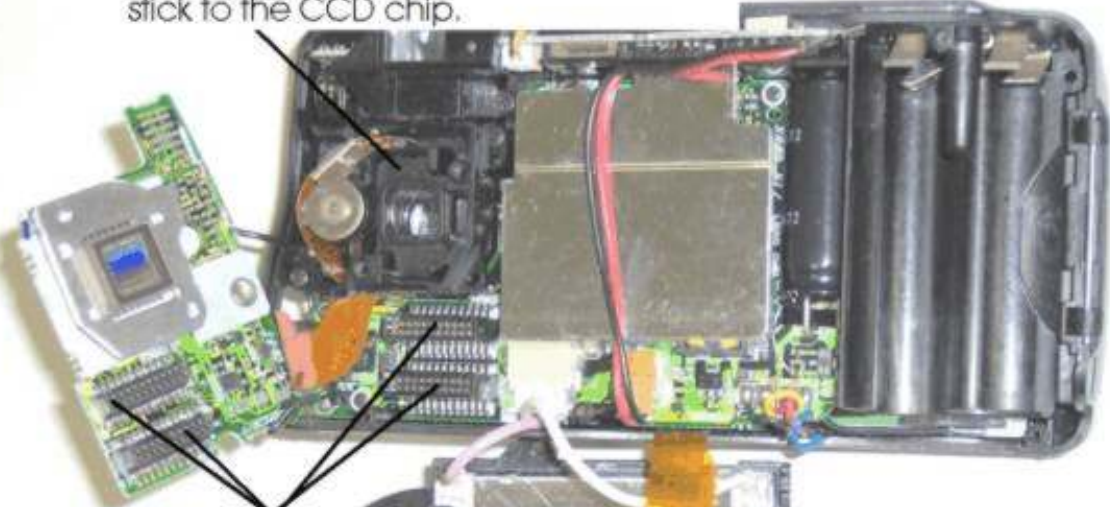


Carefully pry this board loose from the right side.



2005/02/16 00:11

Remove the rubber washer if it did not stick to the CCD chip.

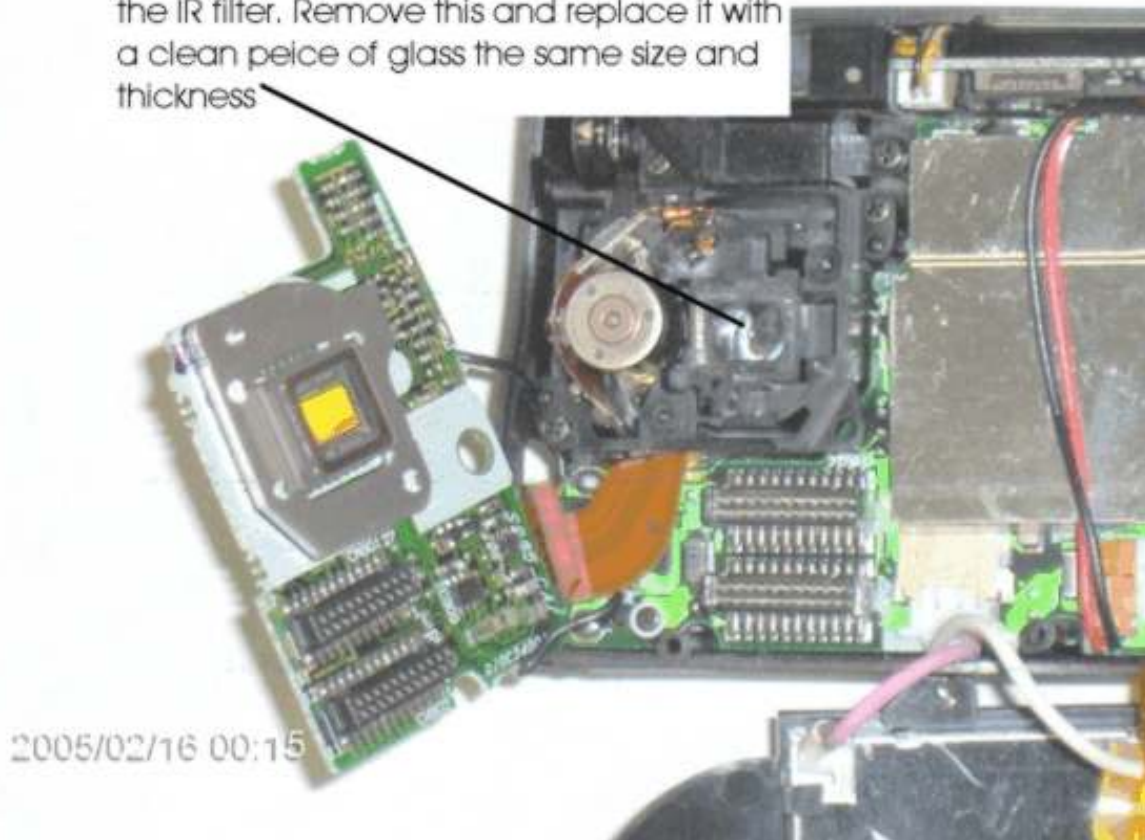


These plug into each other. When you put them back you need to make sure they are plugged in all the way.



2005/02/16 00:13

With the gasket removed you can now see the IR filter. Remove this and replace it with a clean peice of glass the same size and thickness



Now you just reverse the process. Make sure when you put the CCD board back on that it is seated all the way. Then replace the three gold screws.

## Q&A

Q. My camera turns on and takes a picture but I can't hear the lens focussing or take the picture?

A. The CCD board is not plugged in all the way. Remove the back and the LCD screen. Then press firmly on the bottom right of the CCD board. If you look under where they plugs met, they should be nice and flush. You will "feel" them go in.

Q. My LCD screen is not working?

A. Make sure it is plugged in. (Be very careful not to bend or twist the LCD screen).

Q. My camera takes pictures, but they are out of focus?

A. The glass used was not the same thickness. The same thickness must be used or the camera will not be in focus. You can not adjust the focus on these models.

Q. How do I tell if the camera can see IR light?

A. Turn the camera on with the LCD screen on, then take a remote control and point it at the lens of the camera. It should be very bright.

Q. Now what do I do with the camera?

A. Go to [www.pixcontroller.com](http://www.pixcontroller.com) and buy some IR filter. This IR filter is placed in front of the camera's (or slave) flash. It will block 96% of all visible light, but let IR (infrared) light through. The human eye (and deer) eyes can't see IR light, but to the camera its like day time.

Caution:

This is where I tell you that I am not responsible for anything!!! This includes but is not limited to the following:

- Electrical shock
- Loss of screws
- Something not fitting quite right
- LCD breakage
- Loss of blood
- Loss of sleep
- Having parts left over
- Increased cussing
- Camera not working
- Being able to see IR light

I am on Jesses forums, so if you have a question please post it there. If for some reason I don't answer you can send me an Email at [scott@canoeist.ca](mailto:scott@canoeist.ca). If I don't answer that then I am away on business and I'll get back to you when I return.